



ORACLE

# OCI Pricing and Billing

Rohit Rahi

Oracle Cloud Infrastructure

Feb 2020

# Agenda

Pricing Models

Pricing Example

Billing

Cost Management

Free Tier

## Safe Harbor Statement

The following is intended to outline our general product direction. It is intended for information purposes only, and may not be incorporated into any contract. It is not a commitment to deliver any material, code, or functionality, and should not be relied upon in making purchasing decisions. The development, release, and timing of any features or functionality described for Oracle's products remains at the sole discretion of Oracle.

# Pricing Models

## Pay as you go (PAYG)

- Charged only for the resource consumed
- No upfront commitment
- No minimum service period
- Usage metered hourly
- Consumption based model for services like Oracle Functions

## Monthly Flex (Universal Credits)

- A minimum of \$1000 monthly charge and a minimum 12 month fixed commitment
- Observed 33%-60% savings vs PAYG
- Discounts based on size of deal and term of deal
- Usage is consumed from monthly prepaid commitment

## Bring Your Own License (BYOL)

- Apply your current on-premises Oracle licenses to equivalent, highly automated Oracle IaaS & PaaS services in the cloud
- Complete license mobility with on-premises

UC Price list, <https://www.oracle.com/cloud/ucpricing.html>

BYOL FAQs, <https://www.oracle.com/cloud/bring-your-own-license/faq/>

# Factors that impact Pricing

## Resource Size

Bigger resources cost more!

## Data Transfer

No Ingress cost  
Careful with Egress cost

## Resource Type

VMs v/s BMs  
VMs v/s Functions  
BYOL v/s managed DBs..

All OCI regions have the  
same pricing!

## Resource Size

Bigger resources  
cost more!

## Resource Type

VMs v/s BMs  
Intel v/s AMD  
GPU, HPC

Product	Pay As You Go	Monthly Flex	Part Number	Metric
Windows OS	\$0.0204	\$0.0204	B88318	OCPU Per Hour
Virtual Machine Standard - X5	\$0.0638	\$0.0638	B88317	OCPU Per Hour
Compute - Virtual Machine Dense I/O - X7	\$0.1275	\$0.1275	B88516	OCPU Per Hour
Compute - Virtual Machine Standard - X7	\$0.0638	\$0.0638	B88514	OCPU Per Hour
Compute - Virtual Machine GPU Standard - X7	\$1.275	\$1.275	B88518	GPU Per Hour
Compute - Virtual Machine Standard - E2 Micro - Free			B91444	OCPU Per Hour
Compute - Standard - E2	\$0.03	\$0.03	B90425	OCPU Per Hour
Compute - HPC - X7	\$0.075	\$0.075	B90398	OCPU Per Hour
Compute - BM Standard - B1	\$0.0638	\$0.0638	B91119	OCPU Per Hour
Compute - VM Standard - B1	\$0.0638	\$0.0638	B91120	OCPU Per Hour
Compute - Microsoft SQL Enterprise - OCPU Per Hour	\$1.47	\$1.47	B91372	OCPU Per Hour
Compute - Microsoft SQL Standard - OCPU Per Hour	\$0.37	\$0.37	B91373	OCPU Per Hour

# Block Volume Pricing

## Block Volume Pricing

1. Storage cost (GB/month): \$0.0255

+

2. Performance cost (VPU/GB):

- NA for Basic
- 10 VPUs at \$0.017 for Balanced
- 20 VPUs at \$0.034 for Higher Performance

	VPUs/GB	IOPS/GB
Basic	NA	2
Balanced	10	60
Higher Performance	20	75

## 100 GB of BV

### Basic



200 IOPS

Storage (S) : \$0.0255 x100

Performance (P) : \$0

Total (S) + (P) : \$2.55

### Balanced



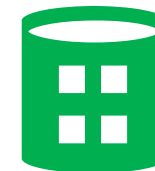
6000 IOPS

Storage (S) : \$0.0255 x100

Performance (P) : \$1.7

Total (S) + (P) : \$4.25

### Higher Performance



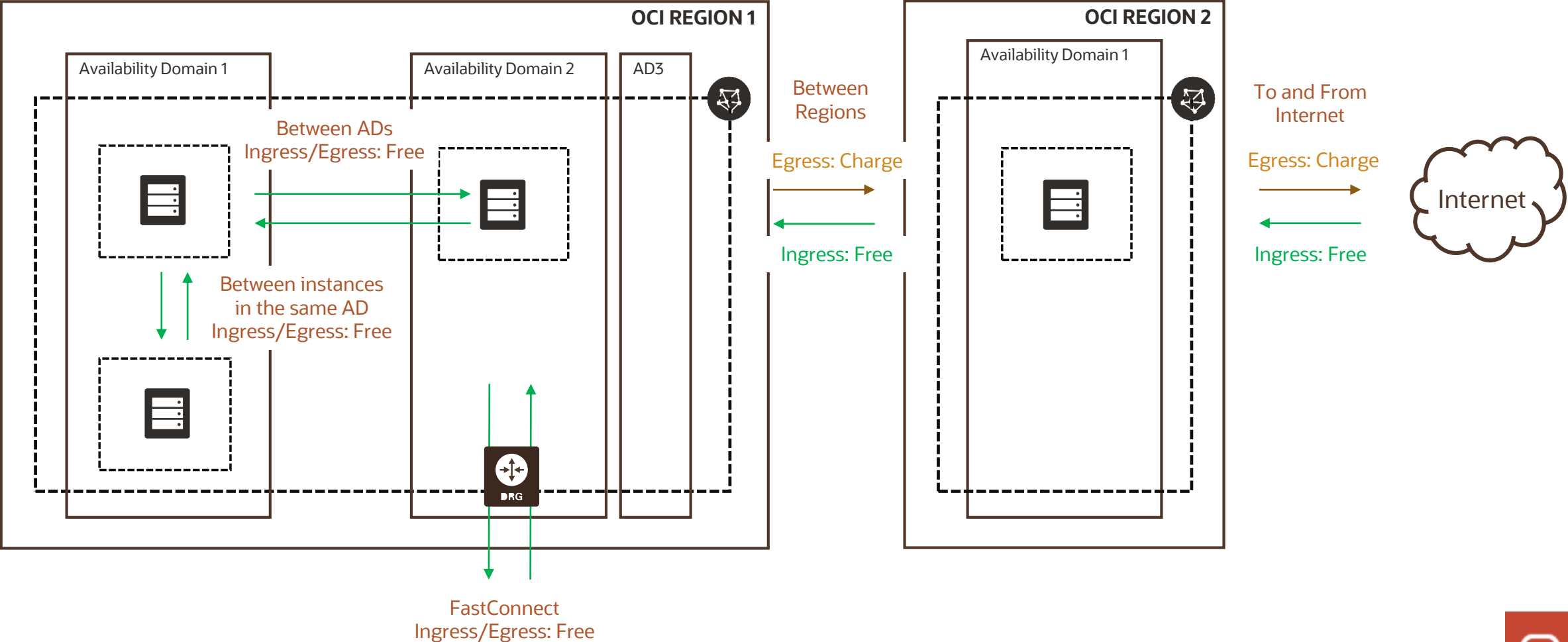
7500 IOPS

Storage (S) : \$0.0255 x100

Performance (P) : \$3.4

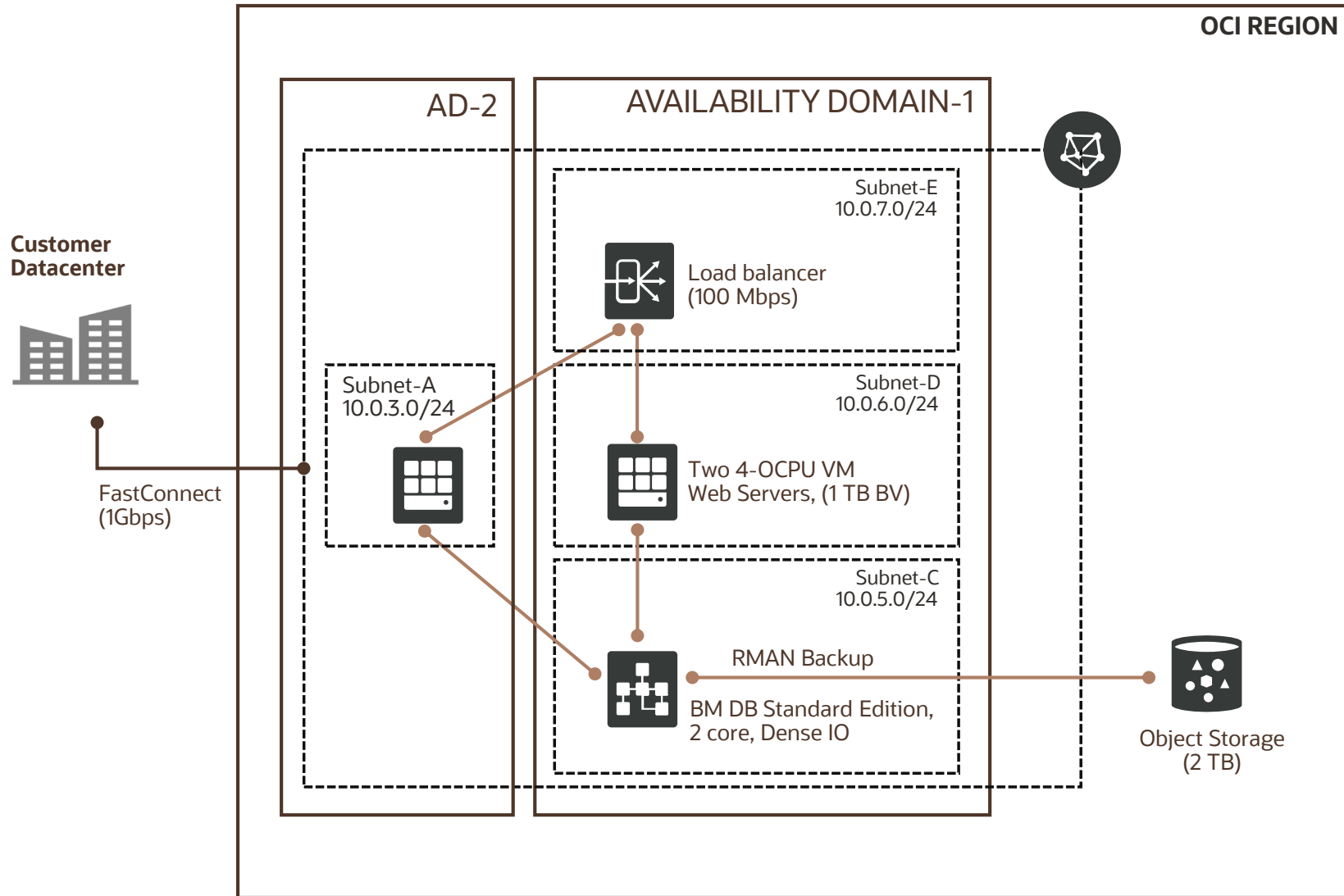
Total (S) + (P) : \$5.95

# Data Transfer costs





# Pricing Example



- Two 4-OCPU Virtual Machine instances
- Total Block Volume Storage: 2 TB
- Object Storage Service: 2 TB
- Database Cloud Service: Standard Edition - Dense I/O
- Virtual Cloud Network: 10TB Outbound Data Transfer
- FastConnect: 1 Gbps\*
- Load Balancer Service: 100 Mbps

# Pricing Example

SKU Name	Part #	PAYG (USD)	Monthly Flex (USD)	Metric	Qty	PAYG Annual cost (USD)	Flex Annual cost (USD)
Oracle Cloud Infrastructure – Block Volume	B91961	\$0.0255	\$0.0255	GB/month	2000	\$612.00	\$612.00
Oracle Cloud Infrastructure – Block Volume Performance Units (High Performance)	B91962	\$0.0017	\$0.0017	VPUs/GB/month	2000	\$816.00	\$816.00
Oracle Cloud Infrastructure – Object Storage - Storage	B88324	\$0.0255	\$0.0255	GB/month	2000	\$612.00	\$612.00
Oracle Cloud Infrastructure – Object Storage - Requests	B88323	\$0.0034	\$0.0034	10K req/month	100	\$4.08	\$4.08
Oracle Cloud Infrastructure – Compute - Virtual Machine Standard - X7	B88514	\$0.0638	\$0.0638	OCPU/hour	8	\$4,556.80	\$4,556.80
Oracle Cloud Infrastructure – Outbound Data Transfer	B88327	\$0.0085	\$0.0085	GB/month	10	0	0
Oracle Cloud Infrastructure – Database Standard Edition - Dense I/O - X7	B89621	\$10.746	\$7.164	Hosted/Hr.	1	\$95,940.24	\$63,960.19
Oracle Cloud Infrastructure – FastConnect 1 Gbps	B88325	\$0.2125	\$0.2125	Port Hour	1	\$1897.20	\$1897.20
Oracle Cloud Infrastructure – 100 Mbps Load Balancer	B88319	\$0.0213	\$0.0213	Load Balancer Hour	1	\$190.16	\$190.16
Total						\$104,624	\$72,644



ORACLE

# Billing and Cost Management

# Cost Tracking Tags

Governance » Tag Namespaces » Tag Namespace Details

## Finance

NS ACTIVE

Add Tags Move Tag Namespace Retire Namespace Delete Tag Namespace

Tag Namespace Information Tags

Description: CostCenter  
OCID: ...5frc3q Show Copy  
Number of Cost-tracking Tags: 0

### Tag Key Definitions in this Namespace

Create Tag Key Definition

This Tag Key Definition will be created in the "Finance" Namespace

TAG KEY

CostCenter

Spaces and periods are not allowed.

DESCRIPTION

Cost center tags

☒ COST-TRACKING ⓘ

TAG VALUE TYPE

☐ STATIC VALUE  
User can enter a string to set the value for this key

☒ A LIST OF VALUES  
User selects from a list to set the value for this key

VALUES

Marketing  
Operations

Separate multiple values with new lines

Create Tag Key Definition

Compute » Instances » Instance Details

## web server AD2

Start Stop Reboot Move Resource Apply Tag(s) Actions

Instance Information Tags

No Tags

There are no tags associated with this resource.

Apply Tag(s)

What is tagging?

Apply One or More Tags to This Resource

What is tagging?

Tagging is a metadata system that allows you to organize and track resources within your tenancy. Tags are composed of keys and values that can be attached to resources.

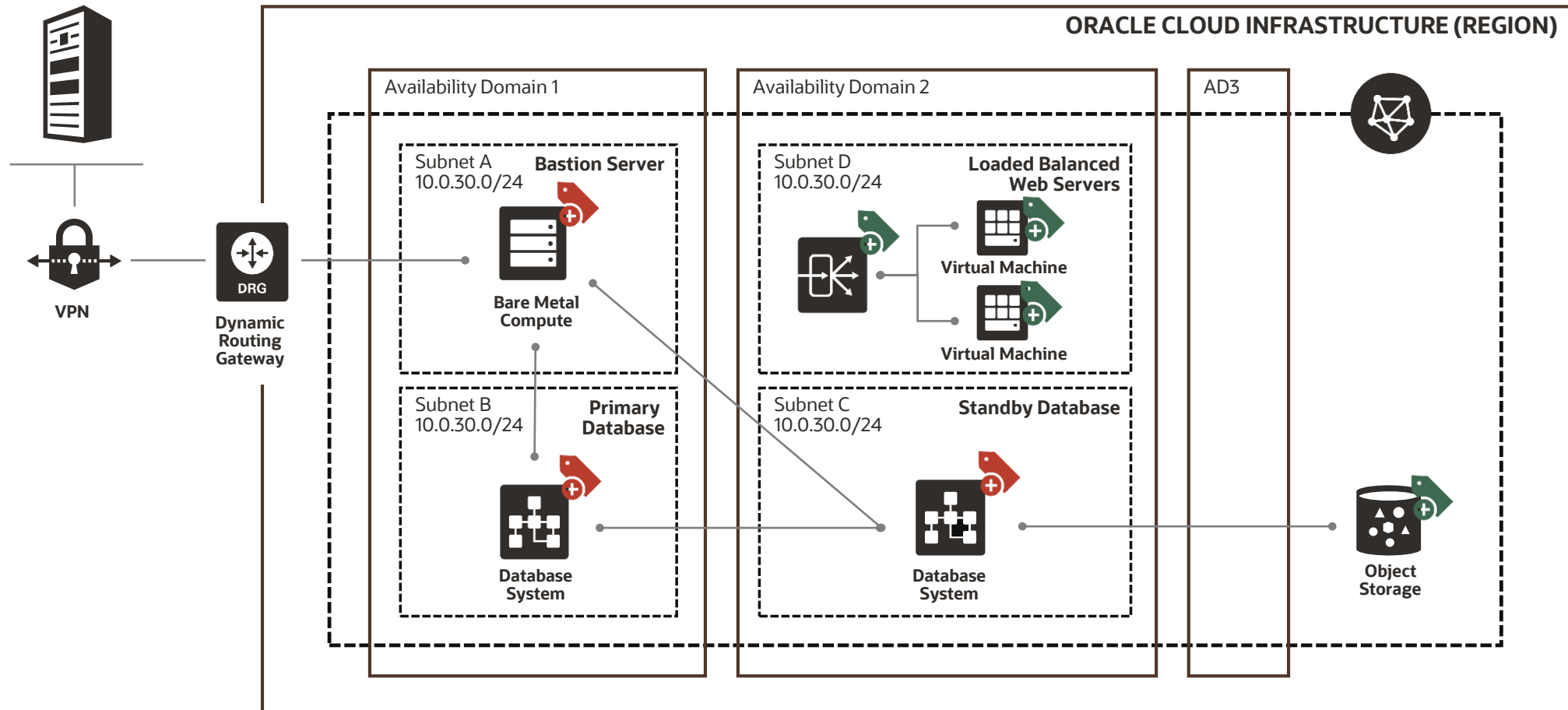
[Learn more about tagging](#)

TAG NAMESPACE	TAG KEY	VALUE
Finance	CostCenter	Marketing

Apply Tag(s)



# Tag all resources



# Cost Analysis

- Visualization tools Help understand spending patterns at a glance
- Filter costs by Date, Tags and Compartments
- To use Cost Analysis you must be a member of the Administrators group

**ORACLE Cloud** us-ashburn-1

**Cost Analysis**

Free Trial Trial Credits Used US\$1,007.16 / US\$5,000.00 Total Days Used 175 / 365 Upgrade account

**Filters**

START DATE: Feb 1, 2019 END DATE: Mar 15, 2019 COMPARTMENT: Filter by Compartment TAG KEY: Filter by Tag TAG VALUE: Apply Filters

Feb 1, 2019 - Mar 15, 2019

Total Usage Charges  
US\$734.81

Service	Total Cost	Total Cost Trend (Feb 1, 2019 - Mar 15, 2019)
> Compute	US\$676.81	
> Block Storage	US\$58.00	
> Object Storage	US\$0.00	

Terms of Use and Privacy Copyright © 2019, Oracle and/or its affiliates. All rights reserved.

Filtering the usage by tags will show you only the costs generated by the resources tagged with "Finance.CostCenter=Marketing"

# Budgets

- A monthly threshold you define for your OCI spend
- Can be set on cost-tracking tags or compartments and track all spending in the cost-tracking tag or compartment and any child compartments
- Can define email alerts that get sent out for your budget
- Alerts are evaluated every 15 minutes, and can be triggered when your actual or forecasted spending hits either a budget % or a specified amount

## Create Budget

### BUDGET SCOPE

☒ COMPARTMENT ☐ COST-TRACKING TAG

### NAME

Name can only contain alphanumeric characters, dashes, periods, and underscores.

### DESCRIPTION

### TARGET COMPARTMENT ⓘ

intoraclerohit (root)

### MONTHLY BUDGET AMOUNT

The minimum allowed value is 1; the maximum allowed value is 999,999,999,999.

## Budget Alert Rule (optional)

You can set up a budget alert rule now, or add it later. You can set up multiple alerts for the same budget.

### THRESHOLD METRIC ⓘ

☒ ACTUAL SPEND ☐ FORECAST SPEND

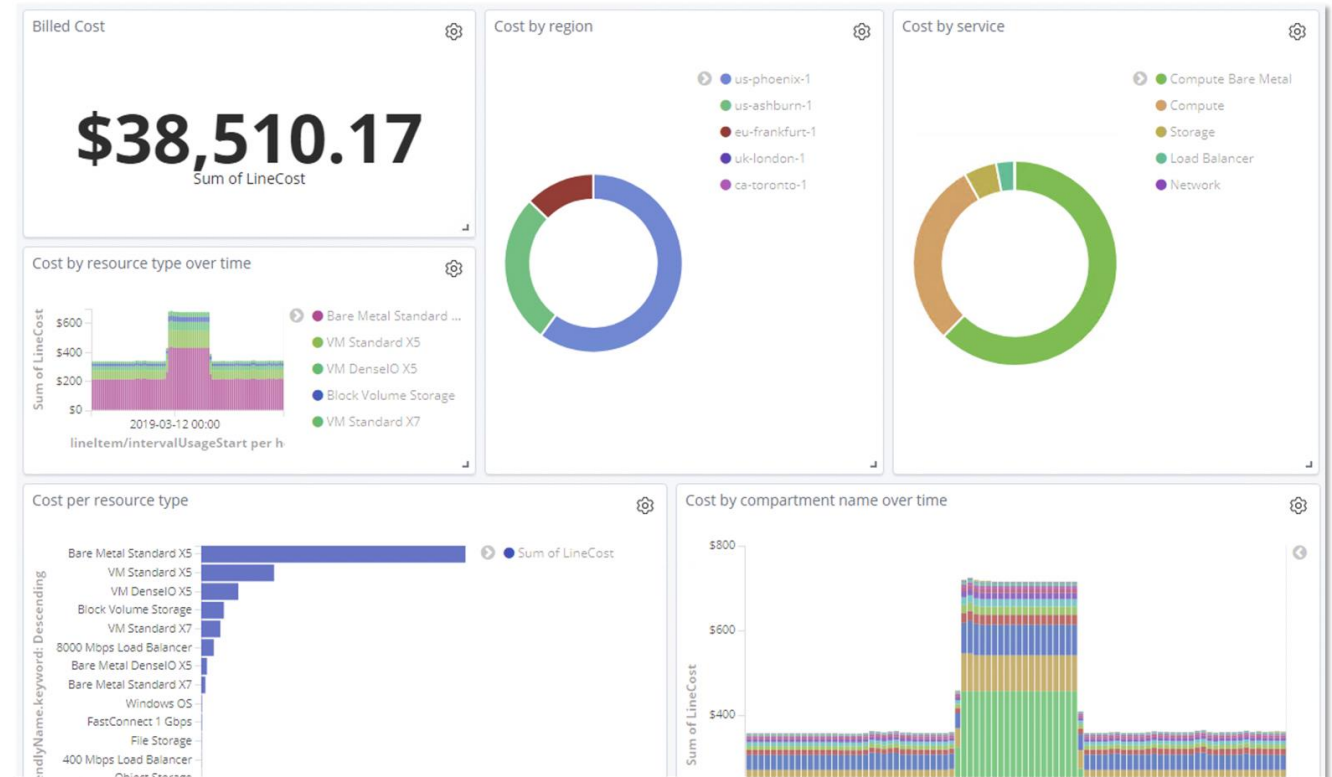
### THRESHOLD TYPE ⓘ

☒ PERCENTAGE OF BUDGET ☐ ABSOLUTE AMOUNT

### THRESHOLD %

# Usage Reports

- Detailed information about your OCI consumption
- CSV file with one record per resource per hour with metadata and tags
- Automatically generated daily, and stored in an Oracle-owned object storage bucket
- Contain 24 hours of usage data
- Retained for one year





ORACLE

Free Tier

# OCI Free Tier + Always Free

## Free Tier

- \$300 free credits valid for 30 days
- Access to a wide range of OCI services
- May be used until your US\$300 of free credits are consumed or the 30 days has expired, whichever comes first.
- Up to eight instances across all available services
- Up to 5 TB of storage

## Always Free

- Services you can use for an unlimited time.
- Two Oracle Autonomous Databases
- Two OCI Compute VMs; Block, Object, and Archive Storage; Load Balancer and data egress; Monitoring and Notifications

<https://www.oracle.com/cloud/free/#free-cloud-trial>

# Summary

Pricing Models

Pricing Example

Billing

Cost Management

Free Tier



### **Oracle Cloud always free tier:**

[oracle.com/cloud/free/](https://oracle.com/cloud/free/)

### **OCI training and certification:**

[cloud.oracle.com/en\\_US/iaas/training](https://cloud.oracle.com/en_US/iaas/training)

[cloud.oracle.com/en\\_US/iaas/training/certification](https://cloud.oracle.com/en_US/iaas/training/certification)

[education.oracle.com/oracle-certification-path/pFamily\\_647](https://education.oracle.com/oracle-certification-path/pFamily_647)

### **OCI hands-on labs:**

[ocitraining.qcloudable.com/provider/oracle](https://ocitraining.qcloudable.com/provider/oracle)

### **Oracle learning library videos on YouTube:**

[youtube.com/user/OracleLearning](https://youtube.com/user/OracleLearning)

Thank you

